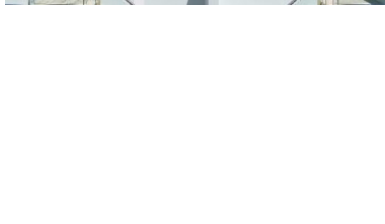
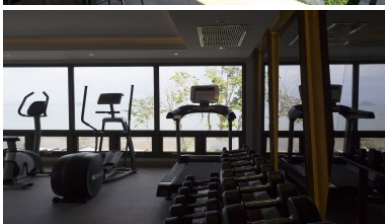
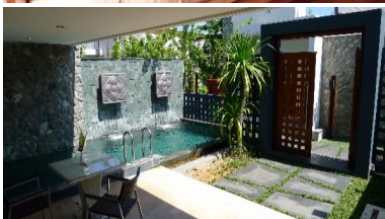
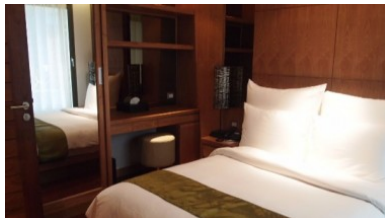
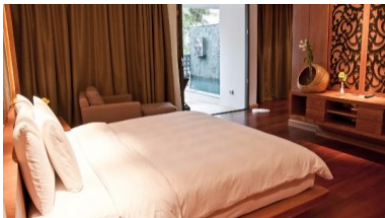
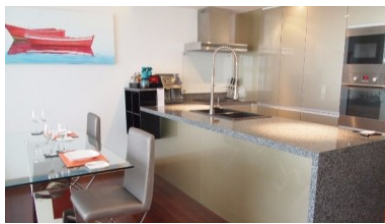
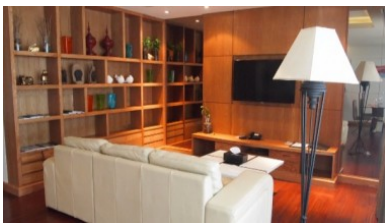


PhuketRealtor.com



288 Soi Ekkamai 18, Khwaeng Khlong Tan Nuea,
Khet Watthana, Krung Thep Maha Nakhon 10110
Ph. 093 606 0906
Office Whats app : +66 93 606 0906

Beachfront East Coast Phuket Condominium For Sale



Property Detail

Price	23,585,587 THB
Location	East Side Thailand
Bedrooms	3
Bathrooms	3
Land Size	area
Building Size	315 sqm
Type	condos

Description

Beachfront East Coast Phuket Condominium For Sale.

This unit on Koh Sirey Beach is the Island's most elegant beachfront condominiums set on a sloping beach, overlooking the stunning islands of Phang Na Bay. The development team is well known for its work with luxury brands and they have created a development that includes elegant private residences each with private pools and direct access to the beach. With attention to the smallest details, it can be seen that quality is a key aspect.

All units have been fitted with a fully functional kitchen and built-in appliances. With floor to ceiling double glazed windows, the units benefit natural sunlight, energy efficiency, and soundproofing to ensure peaceful night's sleep. Tranquil, calm and utterly beautiful, it's located along the Koh Sirey beachfront, a sanctuary of peace and seclusion on Phuket's tranquil east coast. Gorgeous views, endless stretches of beachfront land, with lush natural surroundings. It's spacious, extravagant, an ideal setting for the exclusive condominium community. With inspiring sunrises, the best moonscapes on calm nights where the moon reflects over the calm seas it is the most perfectly relaxing and elegant beachfront condominium in Asia.

Phuket's leisure options are close by. Savor succulent seafood at fine restaurants in town or catch the buzz at some chic bars and enjoy a challenging game of golf at any number of premier courses. Phuket has become the sailing and yachting center of Thailand. It is also home to the Phuket Race Week and the Phuket King's Cup Regatta. Few islands can boast of such an abundance of sandy beaches and clear waters as Phuket. The winding coastal roads along the west coast offer stunning views and easy access to some of the world's finest beaches.

As well as modern beachfront private luxury residences, this is where you can join friends at the clubhouse and unwind with a cool drink at the chic restaurant which is perfectly positioned with direct views of the beach and sea.

Interested with this listing? Contact us today at:

+66 93 606 0906/ info@phuketrealtor.com