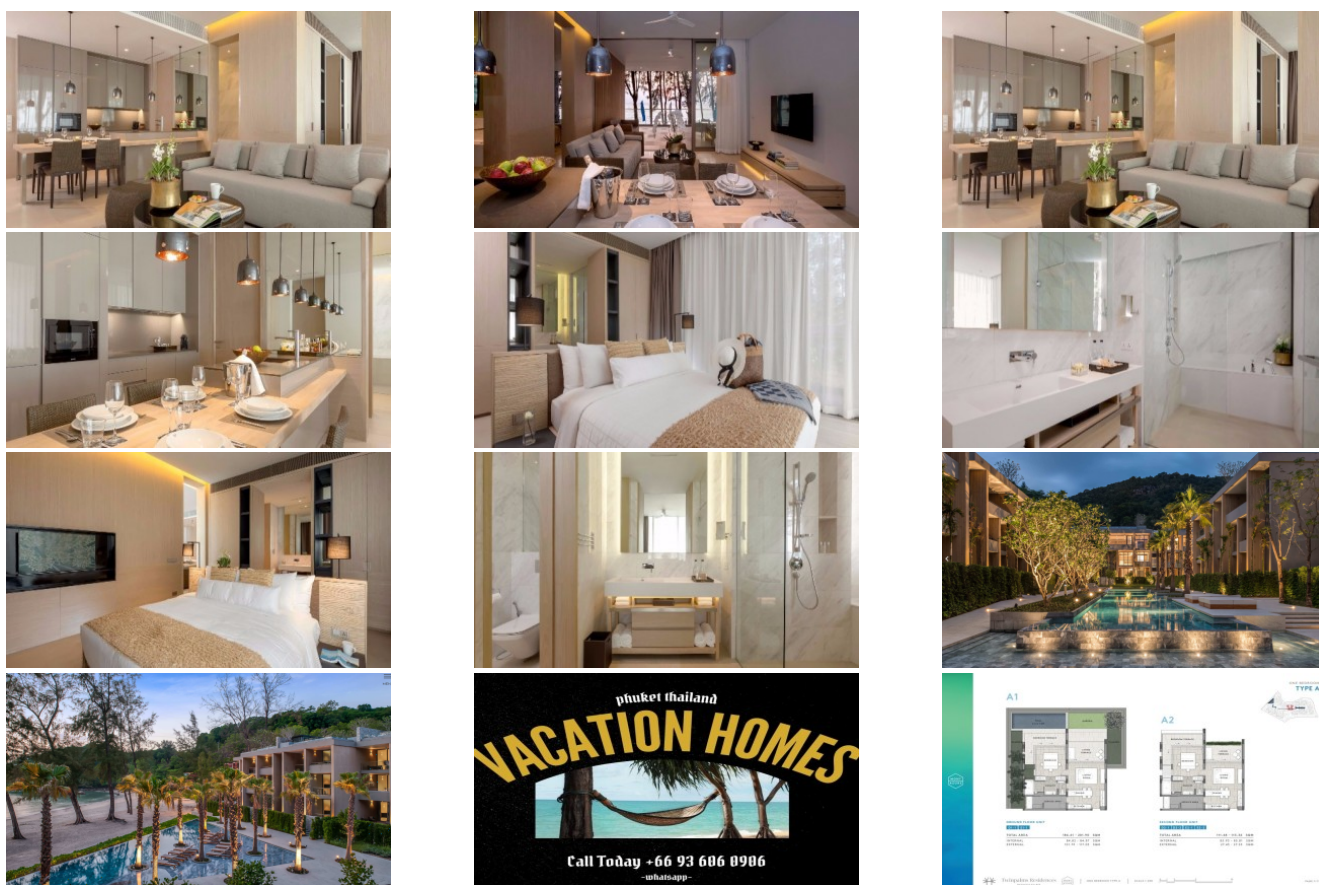


PhuketRealtor.com



288 Soi Ekkamai 18, Khwaeng Khlong Tan Nuea,
Khet Watthana, Krung Thep Maha Nakhon 10110
Ph. 093 606 0906
Office Whats app : +66 93 606 0906

Beachfront Thailand Real-Estate | 2 Bedroom Condominium | On Sale



phuket thailand
VACATION HOMES
Call Today +66 93 606 0906
-whatsapp-





Property Detail

Price	60,000,000 THB
Location	Kamala Thailand
Bedrooms	2
Bathrooms	2
Land Size	area
Building Size	407 sqm
Type	condos

Description

Thailand Real-Estate

This 2-bedroom sea view luxury condominium is located on Kamala Beach, offering a unique opportunity for buyers in the Thailand real estate market. It is part of an integrated beachfront resort and residential community, situated in Phuket's prime west coast location.

The development is designed by Martin Palleros, the acclaimed architect behind the successful Twin Palms Phuket resort. The architectural style combines contemporary tropical design with site-sensitive landscaping, creating a visually pleasing and harmonious environment. The development spans from the mountainside to the ocean, offering a mixed-use concept.

The condominium residences will be professionally managed and operated, providing long-term and short-term holiday accommodation options. This allows investors to enjoy a healthy island lifestyle while earning returns on their investment. The community offers exclusive leisure activities, relaxation options, and luxurious living standards, setting new benchmarks in resort residential living.

The residences are arranged in low-rise clusters, each with private elevators to access each floor. The buildings are centered around two communal swimming pools, surrounded by beautifully landscaped gardens and inspiring tropical scenery. The design incorporates exposed concrete and timber, creating a relaxed and informal resort feel.

The landscaping features a combination of dense coastal trees, tropical gardens, and mature palms that reflect the nearby forest. This adds to the overall natural ambiance of the development.

The Twinpalms group will act as the officially appointed agent for the investment properties within the development. They will provide 24-hour onsite management, including services such as direct reservations, hospitality services, maintenance, and security.

For more detailed information about specific units, pricing, and availability, it is advisable to contact the appointed agent or the developers of the Thailand real estate project.

Interested with this listing? Contact us today at:

+66 93 606 0906/ info@phuketrealtor.com