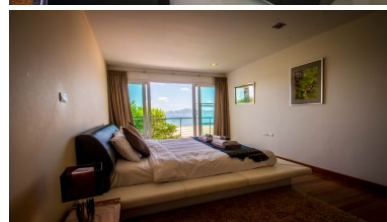
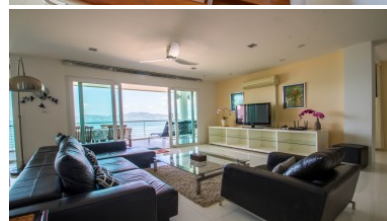
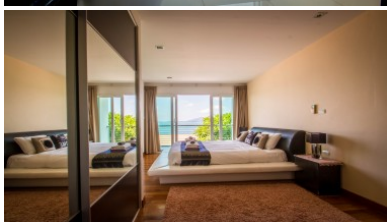
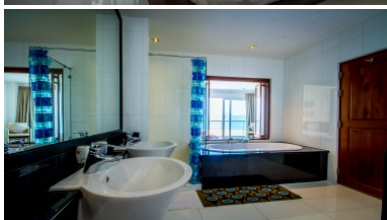
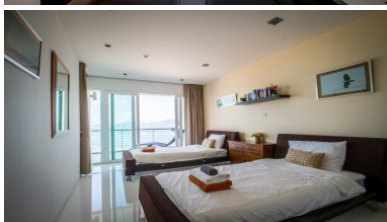
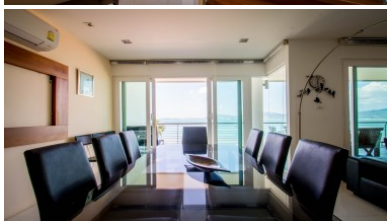
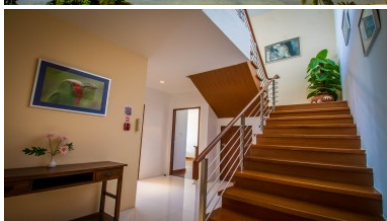
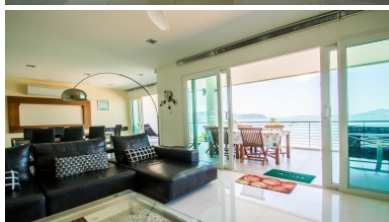
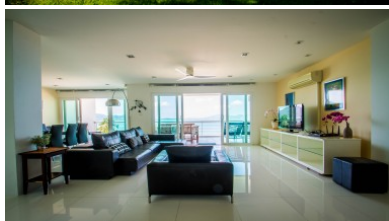


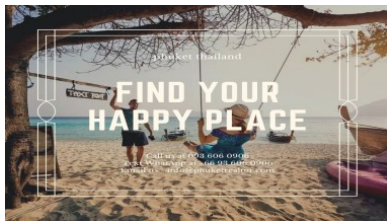


PhuketRealtor.com

288 Soi Ekkamai 18, Khwaeng Khlong Tan Nuea,
Khet Watthana, Krung Thep Maha Nakhon 10110
Ph. 093 606 0906
Office Whats app : +66 93 606 0906

Beachfront Three Bed | Sea View Thailand Apartment for Sale





Property Detail

Price	18,500,000 THB
Location	East Side Thailand
Bedrooms	3
Bathrooms	4
Land Size	area
Building Size	280 sqm
Type	condos

Description

Thailand Apartment for Sale

Experience the ultimate in luxury and exclusivity with this beachfront three-bedroom foreign freehold sea view apartment, situated in one of the most stunning and coveted areas of Phuket.

While Phuket is an island, it is surprising how few properties are actually located directly on the beach. Many claim to be just a short walk or drive away, but this apartment is truly a beachfront oasis.

The master bedroom's en suite bathroom is exceptionally spacious and features a bath where you can unwind while taking in the breathtaking sea views. A large patio provides the perfect setting for al-fresco dining, while a balcony on the bedroom level offers a delightful spot to watch the enchanting lights of the bay at night.

Outside, you'll find a meticulously maintained garden and a magnificent 40m saltwater lap pool, complete with sunbeds and umbrellas. Just two meters beyond the pool lies the pristine Khao Kad beach, allowing you to enjoy the sand and sea at your doorstep.

Situated on the 2nd floor, this Thailand apartment offers uninterrupted sea views that will leave you in awe.

Importantly, this apartment is available for foreign ownership with a freehold title deed, providing you with full ownership rights and peace of mind.

Don't miss the opportunity to own this exceptional beachfront apartment in Phuket. Contact us today to arrange a viewing.

Interested with this listing? Contact us today at:

+66 93 606 0906/ info@phuketrealtor.com