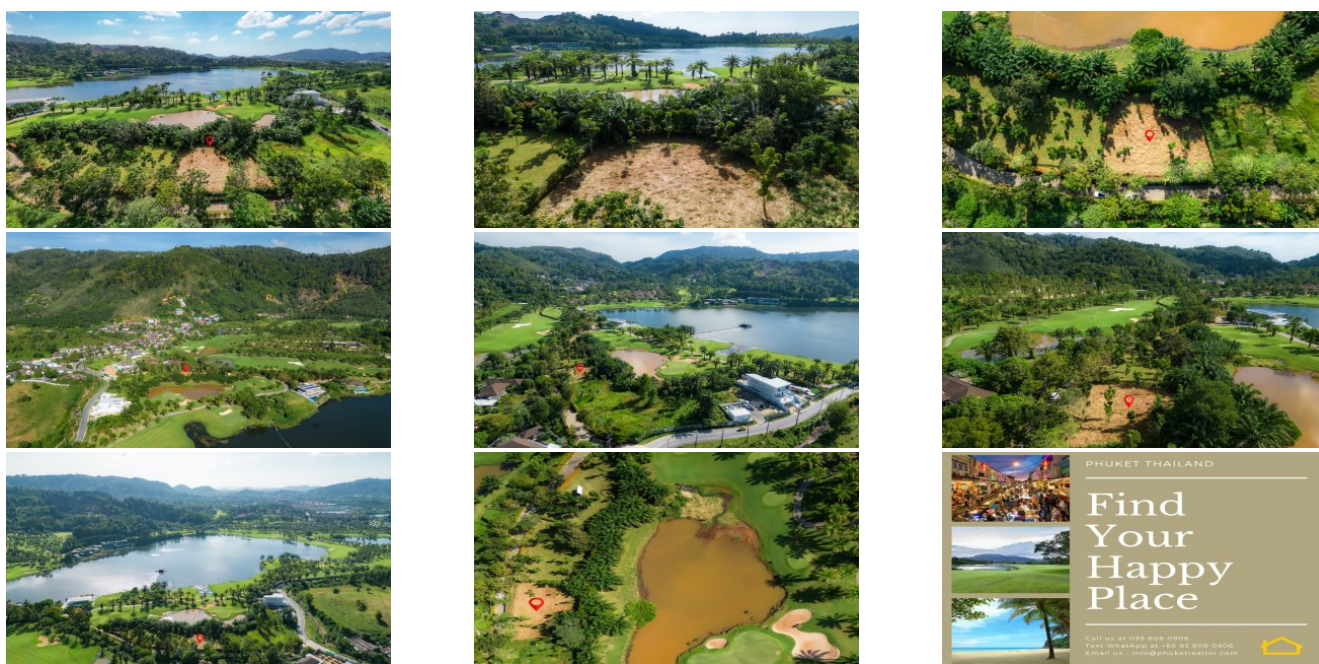


PhuketRealtor.com



288 Soi Ekkamai 18, Khwaeng Khlong Tan Nuea,  
Khet Watthana, Krung Thep Maha Nakhon 10110  
Ph. 093 606 0906  
Office Whats app : +66 93 606 0906

## Build Your Dream Home On The Fairway | Lock Palm Golf Club Land | Phuket Thailand



### Property Detail

Price	16,000,000 THB
Location	Kathu Thailand
Bedrooms	
Bathrooms	
Land Size	1126 area
Building Size	1126 sqm
Type	land

### Description

Lock Palm Golf Club Land

Calling all golf enthusiasts! Unveil your dream home on this exceptional 1,126 sqm prime land plot, perfectly situated right on the golf course in an exclusive gated community boasting only 7 homes. Take advantage of the breathtaking views over the golf course, as 4 trees are set to be cleared under the current contract with the golf course.

This Chanote-titled land comes with Thai freehold ownership, providing you with the ultimate security on your investment. The opportunity to craft your home design awaits, or simply embrace the existing owner's plans with an already secured building permit. The question is, what are you waiting for?

Indulge in a golfer's paradise with not one, but two golf courses – Lock Palm and Red Mountain – offering a total of 36 holes for your daily play. Nestled strategically close to Patong but not too close, this location is nothing short of fantastic.

Centrally located in the heart of Phuket, this property is just a stone's throw away from BISP and within 15 minutes of Headstart International School, Central Floresta Department School, and Patong. Even better, the convenience extends to a mere 45-minute drive to Phuket International Airport.

Seize this rare opportunity to own a piece of golfside paradise. Act now and turn your vision into reality! Contact us today to make this dream property yours.

---

**Interested with this listing? Contact us today at:**

**+66 93 606 0906/ [info@phuketrealtor.com](mailto:info@phuketrealtor.com)**