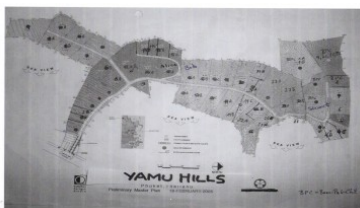
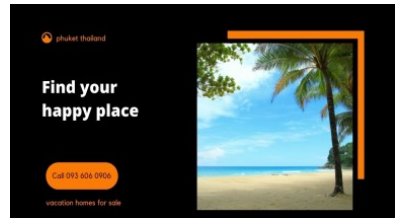
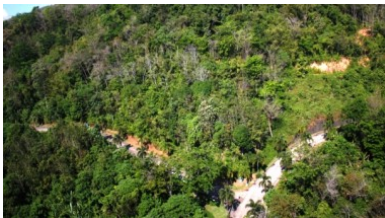
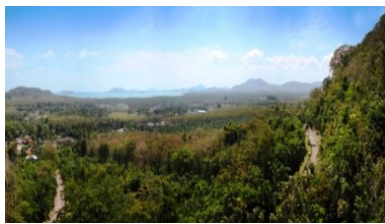




PhuketRealtor.com

288 Soi Ekkamai 18, Khwaeng Khlong Tan Nuea,
Khet Watthana, Krung Thep Maha Nakhon 10110
Ph. 093 606 0906
Office Whats app : +66 93 606 0906

Buy Land in Thailand | Yamu Phuket Sea View Land for Sale | Jetliner Views



Property Detail

Price	4,900,000 THB
Location	East Side Thailand
Bedrooms	
Bathrooms	
Land Size	1600 area
Building Size	1600 sqm
Type	land

Description

[Buy Land in Thailand](#)

Discover the epitome of island living at this exclusive private estate in Phuket, where a breathtaking sea view land awaits its fortunate residents. Offering one of the most awe-inspiring vistas on the entire island, this property overlooks the captivating Phang Nga Bay and its surrounding islands, creating a panorama that will leave you in utter awe.

Situated along the lesser-developed East coast of Phuket, this gem provides a unique opportunity to embrace tranquility and serenity. While the Eastside may be less frequented than its bustling counterparts, it holds a distinct charm and allure of its own. The idyllic beaches here may not boast the pristine white sands of the West, but they possess an undeniable natural beauty that captivates the senses. Nestled by the azure waters, these shores serve as the gateway to some of the most exclusive properties in Phuket, where dramatic sea views of the neighboring islands unfold before your eyes.

Embracing the spirit of luxury living, this estate offers an unrivaled advantage: proximity to all of Phuket's marinas. Indulge in the pleasures of yachting as you set sail from the calm waters of the Eastside, enjoying easy access to world-famous sailing destinations. Amidst an increasingly crowded Phuket, this project ensures that your view remains unobstructed, a precious rarity that adds immeasurable value to this exceptional property.

With a Chanote title, the most secure form of ownership in Thailand, this sea view land promises peace of mind. Impeccable infrastructure is in place, as all parcels within the estate are serviced by a spacious six-meter-wide (18.5 feet) concrete road. The utility lines, including electricity, phone, and high-speed internet, are thoughtfully concealed underground, allowing nature's beauty to take center stage.

This remarkable land plot spans a generous 1 Rai, providing ample space for your visionary dreams to come to life. And the best part? It's priced at an incredible 4,900,000 baht, an extraordinary opportunity to seize a slice of paradise at an unbeatable value.

Don't miss out on this once-in-a-lifetime chance to own a piece of Phuket's paradise. Contact us now to secure your place in this exclusive private estate and immerse yourself in the extraordinary sea views that await you. Act swiftly, as opportunities like this are as rare and precious as the land itself.

Interested with this listing? Contact us today at:

+66 93 606 0906/ info@phuketrealtor.com