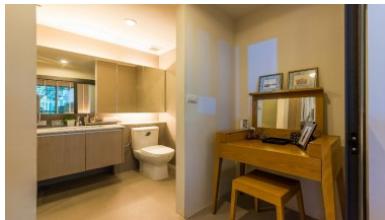
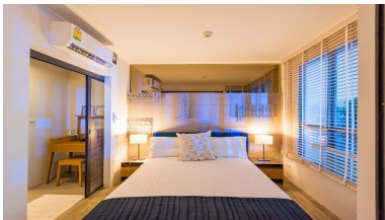
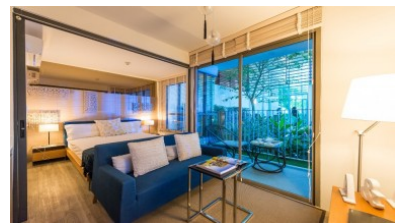
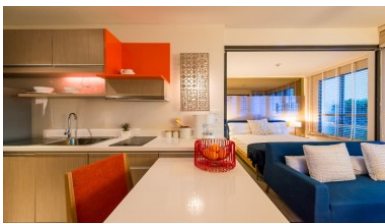


PhuketRealtor.com



288 Soi Ekkamai 18, Khwaeng Khlong Tan Nuea,
Khet Watthana, Krung Thep Maha Nakhon 10110
Ph. 093 606 0906
Office Whats app : +66 93 606 0906

Centrally Located Condo for Sale Phuket | Affordable 2 Bedroom Unit!



Property Detail

Price	4,990,000 THB
Location	Phuket Town Thailand
Bedrooms	2
Bathrooms	2
Land Size	area
Building Size	65 sqm
Type	condos

Description

Condo for Sale Phuket

Experience the epitome of urban living with this exceptional two-bedroom central Phuket condo, perfectly situated at the heart of the city, just across from the renowned Central Festival shopping center.

Designed with a forward-thinking 'smart living' plan, this central Phuket condo effortlessly caters to your urban lifestyle needs. Beyond its functional and practical room layout, these units offer more than just a place to call home.

Nestled on 5 Rai of prime land in the bustling shopping district of Phuket, this development comprises three impressive eight-story buildings, encompassing a total of 465 thoughtfully crafted condominium units.

Discover the true meaning of convenience as these Phuket condos come fully furnished, sparing you the hassle of furnishing your new home. The meticulously planned units are designed to provide a harmonious blend of comfort, style, and functionality.

Delight in a wide range of facilities that complement an active lifestyle. From the spacious lobby that welcomes you to the modern fitness center that invigorates your workouts, every amenity has been carefully curated to enhance your daily routine. Engage in various activities in the dedicated activity room, take a refreshing dip in the salt chlorinated swimming pool, practice your golf skills at the putting green, or embrace a healthy lifestyle on the jogging tracks.

Parking is made hassle-free with ample space available for 134 cars, ensuring that you and your guests can easily access your residence. Rest assured, your safety and security are of utmost importance, with a comprehensive 24-hour security system, key-card access, and CCTV surveillance, providing you with peace of mind and a sense of serenity.

Welcome to a condominium development created specifically for those seeking an active and vibrant lifestyle. Developed by Able Asset Co., Ltd., renowned for their commitment to excellence, this central Phuket condo epitomizes modern urban living at its finest.

Don't miss the opportunity to make this vibrant development your home. Contact us now to secure your place in this remarkable condominium development, designed to enrich your life with style, convenience, and endless possibilities.

Interested with this listing? Contact us today at:

+66 93 606 0906/ info@phuketrealtor.com