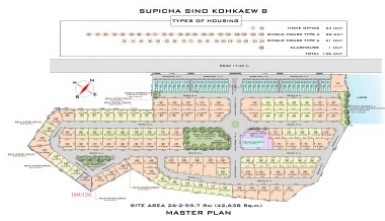
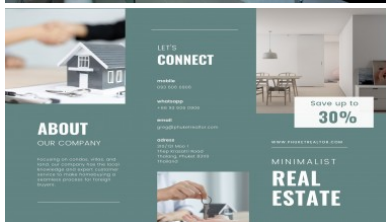
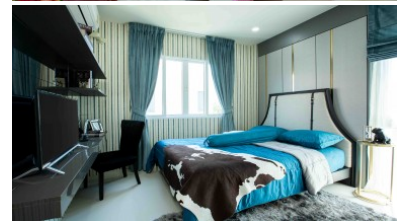
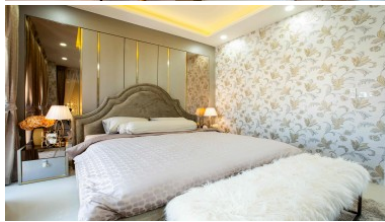
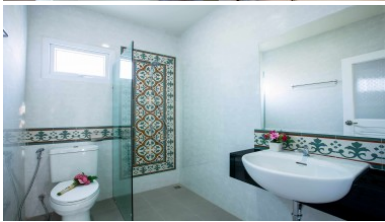
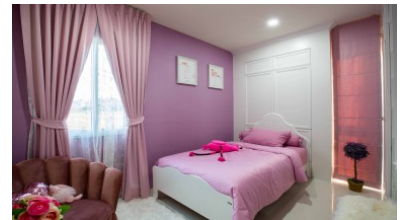


PhuketRealtor.com



288 Soi Ekkamai 18, Khwaeng Khlong Tan Nuea,
Khet Watthana, Krung Thep Maha Nakhon 10110
Ph. 093 606 0906
Office Whats app : +66 93 606 0906

Finally | Affordable Housing in Central Phuket | Thailand



Property Detail

Price	5,590,000 THB
Location	Phuket Town Thailand
Bedrooms	3
Bathrooms	3
Land Size	203 area
Building Size	168 sqm
Type	villa

Description

Affordable Housing in Central Phuket

Introducing a new and affordable housing opportunity in central Phuket, conveniently located near Boat Avenue Marina and the prestigious British International School.

This two-story, fully detached home features three bedrooms and three bathrooms, offering ample space for comfortable living. With private parking for two cars, convenience is at your doorstep.

Priced attractively at just 30k THB per square meter, this home presents an excellent value proposition for prospective buyers.

The estate boasts a range of amenities, including a refreshing common pool, a fitness center, and a dedicated management office, ensuring that your needs are well taken care of.

Families with children attending international schools will find this housing option particularly appealing due to its proximity to renowned educational institutions.

The homes are sold unfurnished, allowing you the freedom to personalize your living space. However, a comprehensive furniture package is available for purchase, priced at 1,500,000 THB. This package includes everything you see in the showroom photos, ensuring a hassle-free move-in experience.

For Thai buyers, bank financing options may be available, making homeownership even more accessible.

Don't miss out on this opportunity to secure an affordable and well-located home in central Phuket. Contact us today to learn more and start the journey towards owning your dream home.

Interested with this listing? Contact us today at:

+66 93 606 0906/ info@phuketrealtor.com