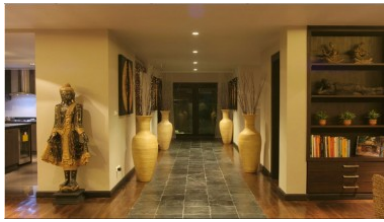
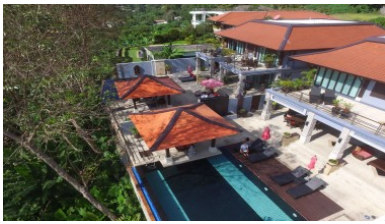


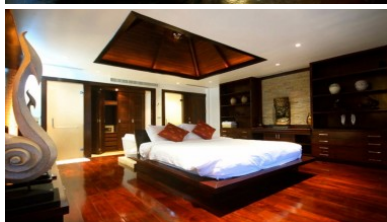
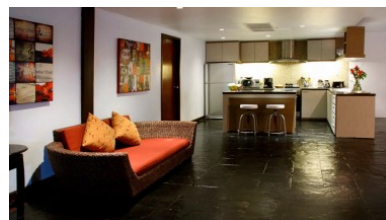
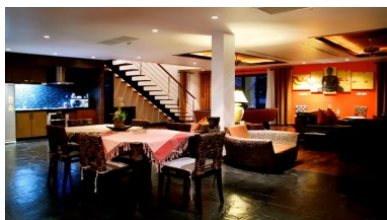
PhuketRealtor.com



288 Soi Ekkamai 18, Khwaeng Khlong Tan Nuea,
Khet Watthana, Krung Thep Maha Nakhon 10110
Ph. 093 606 0906
Office Whats app : +66 93 606 0906

Kalim Sea View Property | Phuket Homes for Sale (2) Side by Side





Property Detail

Price	80,000,000 THB
Location	Patong Thailand
Bedrooms	11
Bathrooms	12
Land Size	1600 area
Building Size	800 sqm
Type	villa

Description

Phuket Homes for Sale (2) Side by Side

Kalim View Villa presents a remarkable investment opportunity with two adjacent private villas, each featuring five bedrooms. This unique configuration allows for versatility, making it ideal for large groups or families. When rented together, the villas offer a total of nine bedrooms, two fully equipped kitchens, two swimming pools, and expanded living spaces. The outdoor living areas connect seamlessly, allowing guests to freely circulate between the villas.

These Thailand homes for sale provide excellent flexibility for accommodating larger rental groups. Each villa boasts a spacious terrace with dining and living areas, as well as a private swimming pool, offering an unforgettable outdoor experience.

Situated on a hillside overlooking Patong Bay, Kalim View Villa enjoys an amazing location just a five-minute drive from Patong Beach's vibrant entertainment and shopping areas.

The 5-bedroom villa features two generous master bedrooms with full ensuite bathrooms, along with one guest bedroom with an ensuite bathroom. All bedrooms are equipped with televisions, DVD and CD players, and safety deposit boxes. The two master bedrooms share a large balcony with breathtaking views of the Andaman Sea. Additionally, the 4-bedroom villa includes an extra twin bedroom, perfect for children or additional guests.

Both villas offer two dining areas—one indoor and one outdoor—allowing you to choose the perfect setting for enjoyable meals with loved ones. A fully equipped kitchen is available for those who prefer to cook their own meals, and an outdoor BBQ is provided on the terrace. The living room features a large flat-screen television and a home theatre system, creating an ideal space for relaxation and entertainment. The extensive DVD collection ensures a wide selection of movies to enjoy.

The outdoor terrace is the ultimate spot for sunbathing and savoring your favorite drink while taking in the private swimming pool. The villa is equipped with CCTV security cameras outside and offers gated private parking for three cars and multiple motorbikes.

In the 5-bedroom villa, you'll find one master bedroom and four spacious guest bedrooms, all with king-size beds and full ensuite bathrooms. The master bedroom includes cable television and a balcony overlooking the Andaman Sea. Safety deposit boxes are provided in all bedrooms. The villa offers two dining areas—one indoor and one outdoor—providing flexibility for dining preferences. The main floor (2nd floor) features a fully equipped kitchen, and there is a kitchenette on the ground floor as well. A BBQ is available on the outdoor terrace. The living room features a large flat-screen television, a home theatre system, and a billiard table for added entertainment. Ample parking space is available for at least three cars and several motorbikes. CCTV surveillance ensures security in the area.

Perched 60 meters above sea level and surrounded by mountains on the rear side, Kalim View Villa offers a serene and tranquil setting for a holiday in Phuket. Whether you seek a flexible investment opportunity or a place to enjoy the lively atmosphere of Patong, this property offers the best of both worlds.

Don't miss out on this exceptional investment opportunity. Contact us today to arrange a viewing of Kalim View Villa and discover the potential it holds.

Interested with this listing? Contact us today at:

+66 93 606 0906/ info@phuketrealtor.com