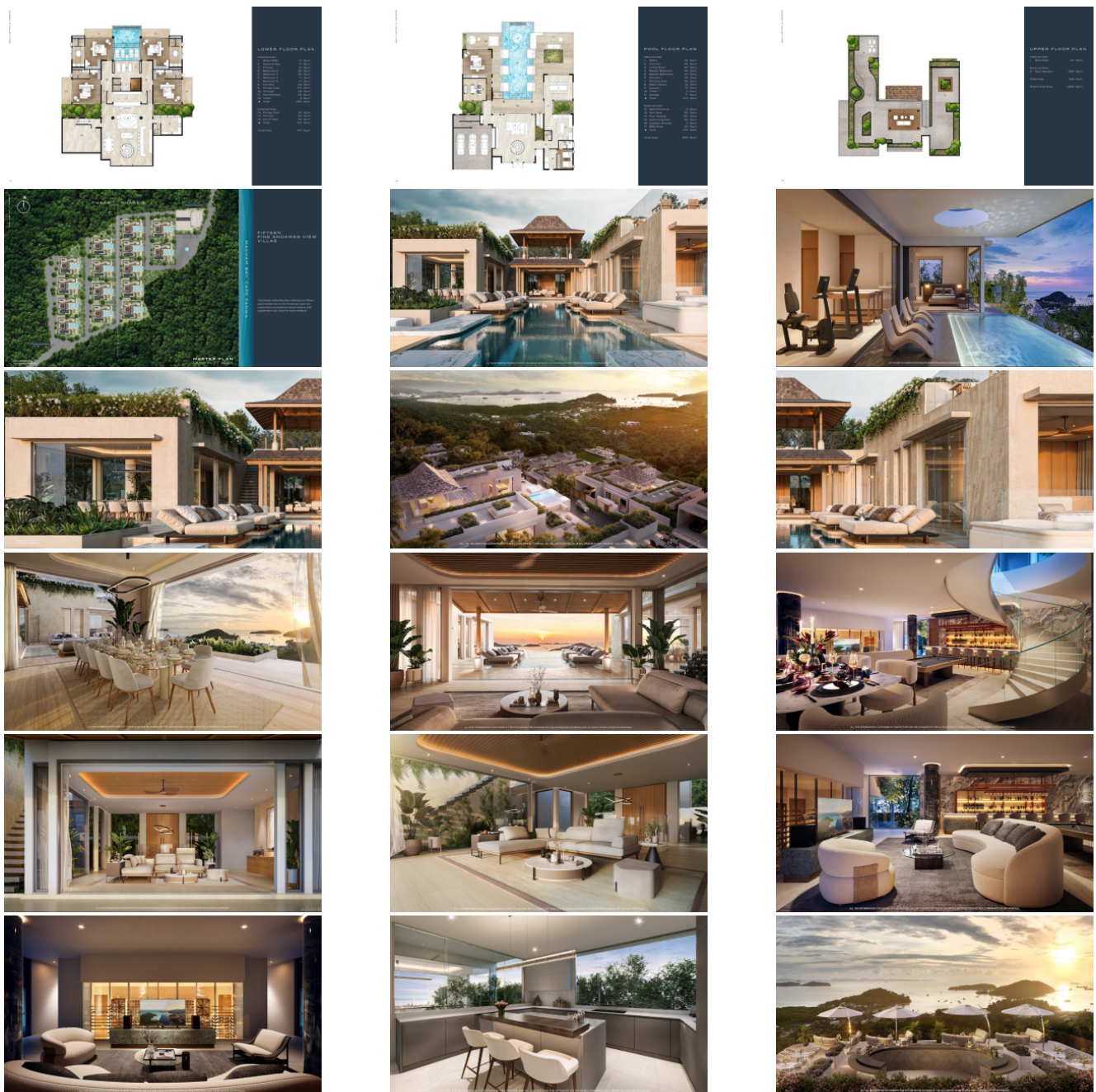


PhuketRealtor.com



288 Soi Ekkamai 18, Khwaeng Khlong Tan Nuea,  
Khet Watthana, Krung Thep Maha Nakhon 10110  
Ph. 093 606 0906  
Office Whats app : +66 93 606 0906

# New Sea-View Hillside Estate | Five Bedroom Private Pool Villas that Won't Disappoint





## Property Detail

Price	155,000,000 THB
Location	East Side Thailand
Bedrooms	5
Bathrooms	6
Land Size	1097 area
Building Size	1609 sqm
Type	villa

## Description

### New Sea-View Hillside Estate

#### Description

Garden Atlas Bayview Phuket is an exclusive collection of modern luxury villas set on an elevated hillside, designed to capture sweeping sea views and Phuket's iconic sunsets. This boutique development blends contemporary architecture with natural surroundings, offering privacy, space, and a refined tropical lifestyle.

Each villa is thoughtfully designed with expansive open-plan living areas, high ceilings, and full-height glass doors that seamlessly connect indoor and outdoor spaces. Private infinity pools, sun decks, and landscaped gardens create a true resort-style atmosphere, while premium materials and clean architectural lines deliver a sophisticated, modern finish.

The villas are available in spacious 3- to 5-bedroom layouts, ideal for families, holiday homes, or high-performing rental investments. Every detail is designed for comfort, functionality, and long-term value.

#### Location & Lifestyle

Located in a peaceful yet highly desirable area of Phuket, Garden Atlas Bayview offers easy access to beaches, international schools, shopping, and dining. The elevated position provides not only privacy and cooler breezes but also uninterrupted views—something increasingly rare on the island.

---

## **Villa Options**

- 3 to 5 Bedroom Private Pool Villas
  - Generous land plots with sea-view positioning
  - Modern tropical design with indoor-outdoor flow
- 

## **Ownership & Payment Terms**

- Thai Freehold (villa structure)
- Leasehold or Thai Company for land ownership
- Staged construction payment plans available

## **Typical Payment Plan:**

- Reservation Fee: 200,000 THB
  - Contract Signing: 30%
  - Construction Progress Payments: 40% (in stages)
  - Completion & Transfer: 30%
- 

## **Lifestyle Meets Investment**

Sea-view villas in Phuket remain one of the most limited and sought-after asset classes. Garden Atlas Bayview Phuket offers a compelling opportunity to secure a premium hillside property with strong capital appreciation potential and excellent rental demand.

---

**To receive floor plans, price list, and current availability, reach out today. Opportunities with true sea views at this level are becoming increasingly rare—secure your position early. Invest with Confidence.**

---

**Interested with this listing? Contact us today at:**

+66 93 606 0906/ [info@phuketrealtor.com](mailto:info@phuketrealtor.com)