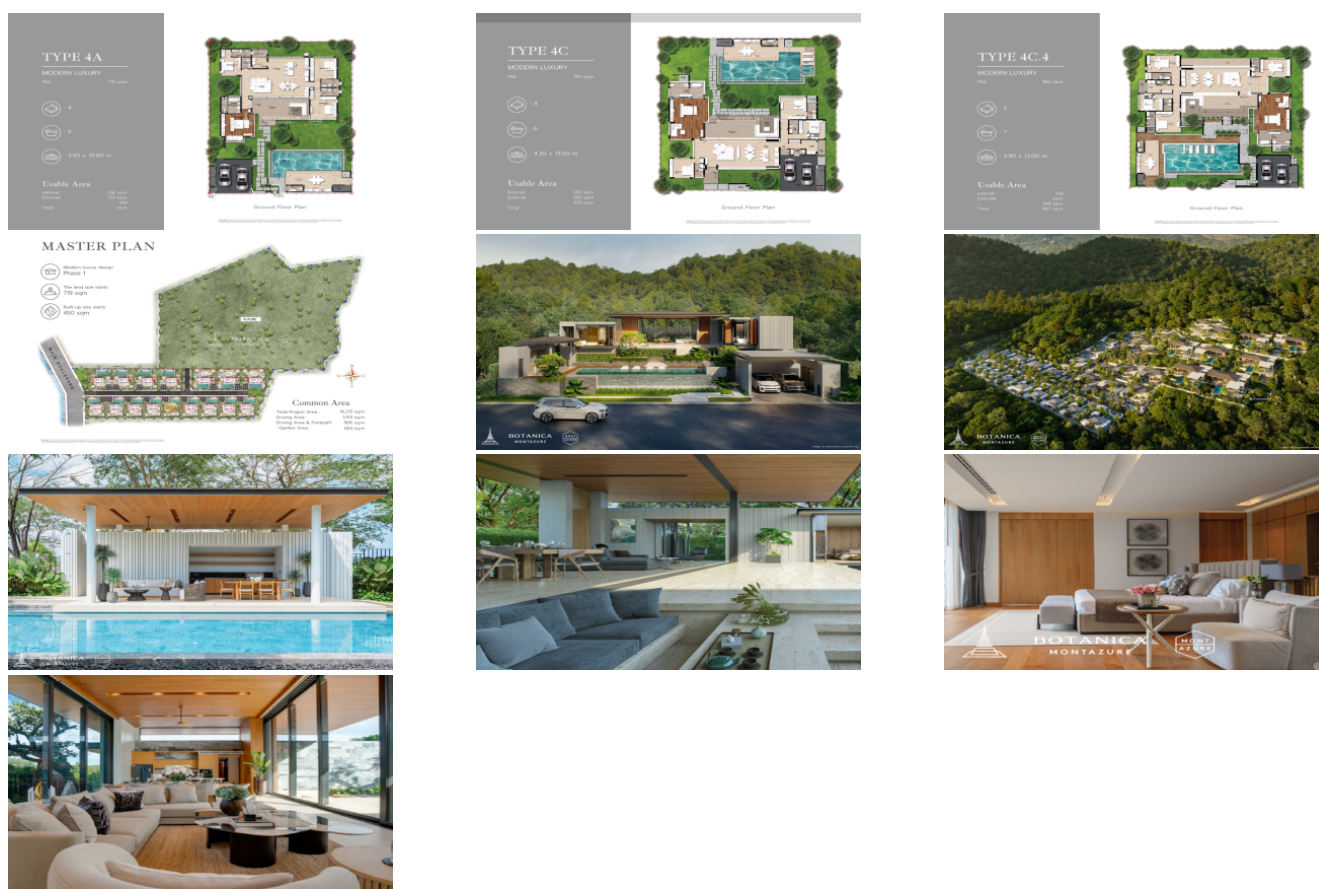




288 Soi Ekkamai 18, Khwaeng Khlong Tan Nuea,  
 Khet Watthana, Krung Thep Maha Nakhon 10110  
 Ph. 093 606 0906  
 Office Whats app : +66 93 606 0906

# Own a Lavish Lifestyle Steps Away from the Beach | Botanica MontAzure Phuket Thailand



## Property Detail

Price	53,046,000 THB
Location	Kamala Thailand
Bedrooms	4
Bathrooms	5
Land Size	719 area
Building Size	464 sqm
Type	villa

# Description

## Botanica MontAzure Phuket Thailand

Welcome to Botanica MontAzure, an exceptional villa project situated in the heart of Kamala, Phuket. Scheduled for completion in 2027, this eagerly anticipated development offers 36 meticulously designed units, setting a new standard in luxurious living.

Led by Botanica Luxury Phuket Co., Ltd., the esteemed developers behind a series of successful projects including Botanica Foresta and Botanica Modern Loft, Botanica MontAzure promises sophistication and quality craftsmanship.

Designed to simplify your life, Botanica MontAzure provides an array of amenities including 24-hour security, CCTV surveillance, ample parking, a playground, lush gardens, a swimming pool, a gym, a fitness corner, and a jogging track—ensuring a safe and comfortable living environment.

With prices ranging from ?48,218,000 to ?73,686,000, offering both leasehold and freehold options, Botanica MontAzure caters to diverse preferences and financial plans.

Discover a selection of spacious 4+ bedroom units, each thoughtfully crafted to offer a unique and comfortable living experience tailored to your lifestyle.

Nestled within the prestigious MontAzure beachfront development, residents enjoy direct access to the beach via a charming walking path, seamlessly blending coastal living with modern convenience.

Take the first step towards luxury living at Botanica MontAzure. Contact us today to arrange a viewing and secure your dream villa. Your ideal home awaits.

---

**Interested with this listing? Contact us today at:**

**+66 93 606 0906/ [info@phuketrealtor.com](mailto:info@phuketrealtor.com)**