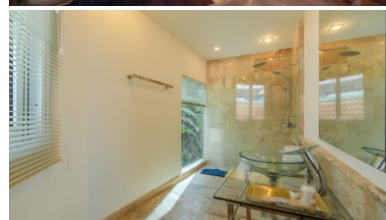
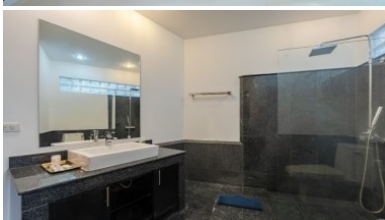
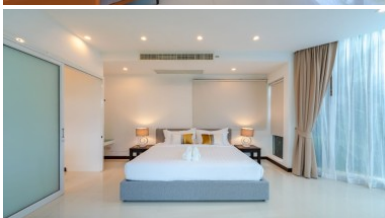
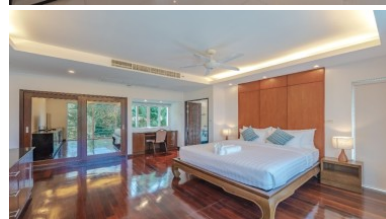
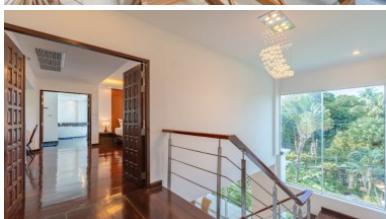
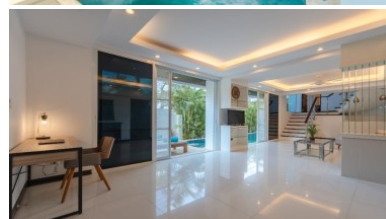
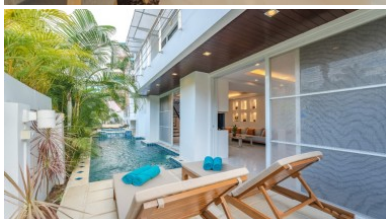
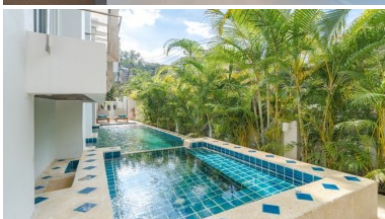




288 Soi Ekkamai 18, Khwaeng Khlong Tan Nuea,
Khet Watthana, Krung Thep Maha Nakhon 10110
Ph. 093 606 0906
Office Whats app : +66 93 606 0906

Partial Sea View House in Patong Beach | Phuket Thailand | Just Completely Renovated





Property Detail

Price	30,000,000 THB
Location	Patong Thailand
Bedrooms	4
Bathrooms	4
Land Size	260 area
Building Size	350 sqm
Type	villa

Description

Partial Sea View House in Patong Beach

Discover the ultimate retreat at White Villa Patong, perched at the serene south end of Patong with partial views of Patong Bay. Nestled amidst swaying palms, this tranquil haven is your gateway to Phuket's splendid beaches, world-class shopping, delectable dining, and vibrant nightlife – all just minutes away.

Immerse yourself in luxury with this sea-view villa, nestled within an exclusive and upscale neighborhood of spacious homes. Here, you're just a stone's throw away from the lively Patong beach and its renowned entertainment and nightlife, yet you'll enjoy a peaceful escape from the noise and crowds.

The White Villa Patong boasts a modern architectural design, featuring four spacious bedrooms (three with ensuite bathrooms) spread across three floors. Enclosed by a 3-meter high boundary wall, your privacy and security are guaranteed with remote-controlled gates granting access to the private car park and main entrance.

Perfect for a close-knit family or a group of friends seeking luxury and seclusion in an ideal location, the White Villa Patong offers unparalleled quality. Each room offers a private balcony overlooking the sea and mountains.

Entertainment enthusiasts will adore the villa's expansive entertainment area, complete with smart TVs offering TrueVision Platinum packages and a cozy bar area with direct access to the 12-meter-long pool and Jacuzzi. Whether you're unwinding after a day at the beach or preparing for a night on the town, this villa is designed for your pleasure.

The heart of the villa lies on the middle floor, with an inviting open-plan Chef's kitchen and dining area. Here, you can relish views of neighboring Thai-style villas and the ocean beyond.

Situated equidistant between Patong Beach and Tri Trang Beach, the villa is a mere 5-minute drive from the bustling center of Patong. Revel in easy access to pristine beaches, shopping centers, tantalizing restaurants, soothing massage shops, cozy cafes, lively bars, and a vibrant nightlife scene.

Prepare your own meals in the modern, fully equipped kitchen, featuring top-notch appliances such as a dishwasher, oven, gas hob, hood, and microwave.

At the White Villa Patong embark on an unforgettable Phuket adventure filled with luxury, privacy, and convenience. Your perfect hideaway awaits!

Interested with this listing? Contact us today at:

+66 93 606 0906/ info@phuketrealtor.com