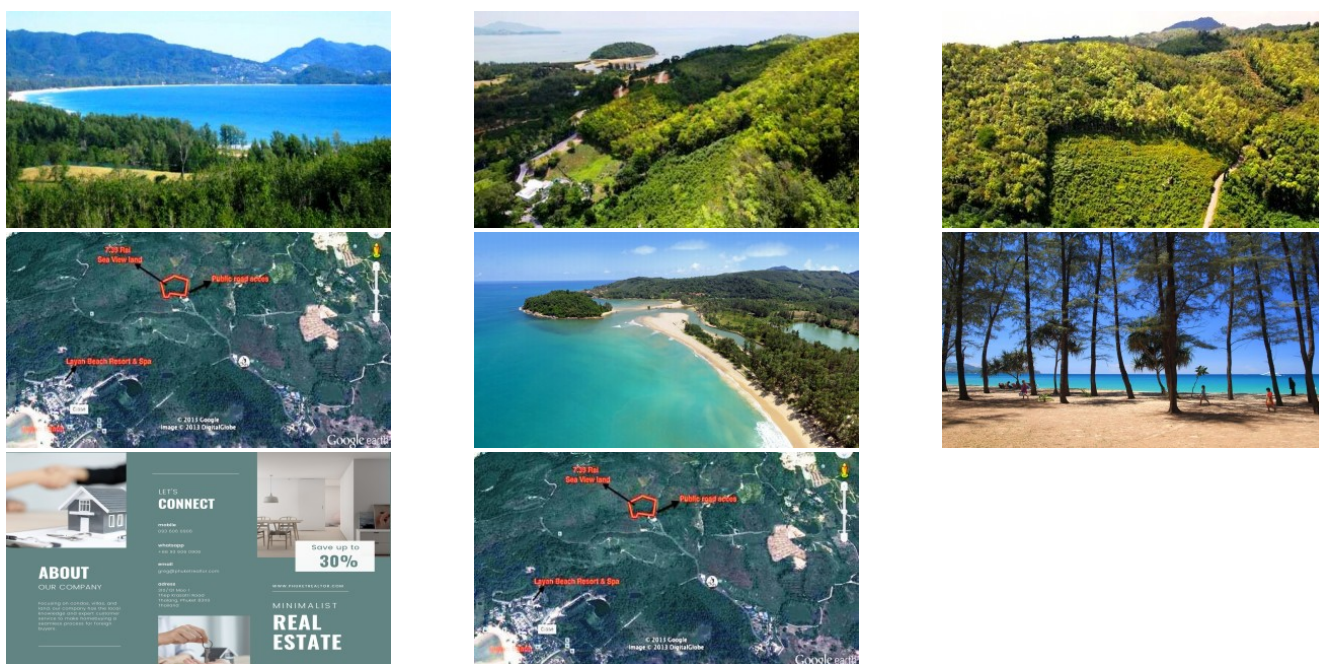


PhuketRealtor.com



288 Soi Ekkamai 18, Khwaeng Khlong Tan Nuea,
Khet Watthana, Krung Thep Maha Nakhon 10110
Ph. 093 606 0906
Office Whats app : +66 93 606 0906

Phuket Sea View Land | Quiet Layan Beach Phuket Plot for Sale



Property Detail

Price	88,600,000 THB
Location	Layan Thailand
Bedrooms	
Bathrooms	
Land Size	11824 area
Building Size	11824 sqm
Type	land

Description

Phuket Sea View Land

This sea-view land plot offers excellent potential for development, whether it be large homes, a resort, a hotel, or a condominium project. The land has previously obtained building permits for large homes, and the current regulations in Thailand allow for the construction of condominiums on this hillside sea-view land.

The land benefits from well-paved road access, making it easily accessible. It boasts stunning views overlooking Layan Beach, Bang Tao Beach, and Laguna Phuket, including beautiful sunset views. Additionally, the land is within walking distance of the beach, further enhancing its appeal. The West coast of Phuket, where the land is located, has been experiencing increasing land values year after year.

Phuket's land prices have been rising at an average rate of 13% annually, making it a lucrative investment opportunity. The proximity to Laguna Phuket adds to the land's value, as it offers a range of amenities such as shopping, dining, entertainment, and golf facilities. This would provide excellent marketing opportunities for any project developed on this sea-view land plot.

The total area of the land is 7.39 Rai or 11,824 square meters, providing ample space for various development possibilities.

The price for this sea view land plot is 11.5 million baht per Rai, reflecting the high value and potential of the location.

Interested with this listing? Contact us today at:

+66 93 606 0906/ info@phuketrealtor.com