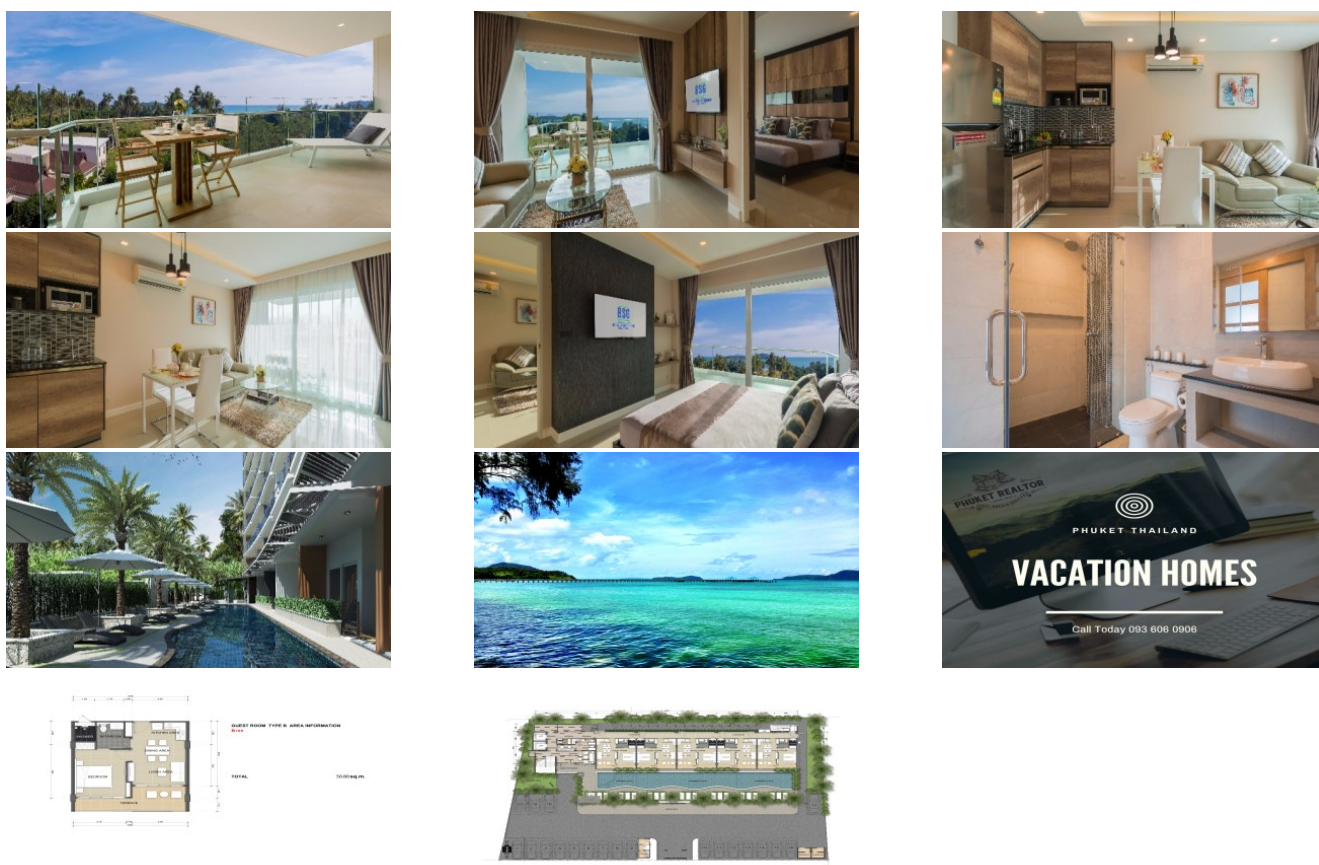


PhuketRealtor.com



288 Soi Ekkamai 18, Khwaeng Khlong Tan Nuea,  
Khet Watthana, Krung Thep Maha Nakhon 10110  
Ph. 093 606 0906  
Office Whats app : +66 93 606 0906

## Retire in Phuket Thailand | Sea View Condo For Sale | Rawai Beach



### Property Detail

Price	5,500,000 THB
Location	Rawai Thailand
Bedrooms	1
Bathrooms	1
Land Size	area
Building Size	51 sqm
Type	condos

# Description

## Retire in Phuket Thailand

Discover the epitome of comfort and relaxation in this exclusive freehold sea view condo for sale in Phuket, Thailand. Designed to create memorable moments, this project seamlessly blends modern contemporary design with traditional Thai hospitality.

Situated on a prime location spanning over 1875 sq.m of land, this project features a seven-story building with only 41 stylish units. With options ranging from one to two-bedroom sea view condos, each unit is thoughtfully designed to ensure ample privacy and comfort. The sizes of the units vary from 48.5 sq.m to 105 sq.m, catering to different preferences and lifestyles.

The location of this freehold sea view condo is truly remarkable, nestled adjacent to Laem Ka and Rawai beaches. With breathtaking views of the Andaman Sea, including Koh Bon and Coral Island, residents will enjoy the beauty of the surroundings. The project is strategically positioned just 400m from Rawai beach and directly facing the South East Coast of Phuket, granting most residents magnificent sea views.

For those seeking tranquility while still being close to the vibrant scene of Rawai, this condo is the perfect choice. Rawai is known for its Sea Gypsy Market and local seafood restaurants located beneath the famous beach's casuarina trees. The project offers proximity to these attractions while maintaining a peaceful atmosphere. To ensure the best possible experience for residents, the project shares ownership and experience with an award-winning local boutique resort known for its exceptional customer service and satisfaction.

The condominium is fully walled and overlooks a stunning 4 x 34m overflow swimming pool that runs along the front side of the building, surrounded by lush tropical gardens. Each freehold sea view condo boasts a spacious "leaving balcony" with views of the sea and/or pool, creating an instant holiday ambiance. This outdoor space is perfect for living and entertaining, providing a serene backdrop for quality time with family and friends. Additionally, the 8th floor features an exclusive Sky Garden with a 5 x 13.6m infinity swimming pool and bar, offering breathtaking views of the Andaman Sea.

For those interested in foreign freehold ownership, an upgrade option is available for an additional 350,000 THB, providing added flexibility and investment value.

Immerse yourself in a life of comfort, luxury, and tranquility at this exclusive freehold sea view condo. Contact us now to secure your place in this remarkable project and experience the best of Phuket living.

---

**Interested with this listing? Contact us today at:**

+66 93 606 0906/ [info@phuketrealtor.com](mailto:info@phuketrealtor.com)