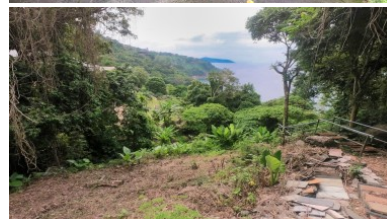
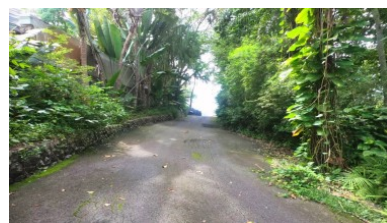
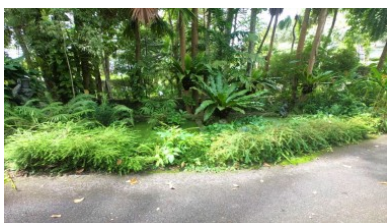




**PhuketRealtor.com**

288 Soi Ekkamai 18, Khwaeng Khlong Tan Nuea,  
Khet Watthana, Krung Thep Maha Nakhon 10110  
Ph. 093 606 0906  
Office Whats app : +66 93 606 0906

## Sea View Land Plot at WaterFall Bay Phuket | Very Exclusive, Very Lush



## Property Detail

Price

85,000,000 THB

Location

Kamala Thailand

Bedrooms

Bathrooms

Land Size	3288 area
Building Size	3288 sqm
Type	land

---

## Description

### Sea View Land Plot at WaterFall Bay Phuket

Welcome to Waterfall Bay, the most sought-after address in Phuket, Thailand. Our exclusive gated estate on the west side of the island offers breathtaking sunsets that will grace your villa every night of the week.

Nestled on a lush headland with stunning sea views, Waterfall Bay is the epitome of luxury living. This plot is unique in its location within the estate, offering the perfect combination of seclusion and accessibility.

Just five minutes from Kamala, ten minutes from Surin, and fifteen minutes from Bang Tao, you'll be in the heart of all the fine dining and activities that Phuket has to offer. And yet, within the estate, you'll find a peaceful retreat, complete with a soothing natural waterfall that flows down the land plot.

Spanning 2 Rai (3,288 sqm), this is your opportunity to build your dream villa and put your stamp on Phuket. With a blank canvas, you can create a masterpiece that will only increase in value over time.

Note: The video is of a home in WaterFall Bay estate that sold in 2019.

Don't miss out on this once-in-a-lifetime opportunity. Contact us today to schedule a private inspection and begin your journey to luxury living at Waterfall Bay.

---

**Interested with this listing? Contact us today at:**

+66 93 606 0906/ [info@phuketrealtor.com](mailto:info@phuketrealtor.com)