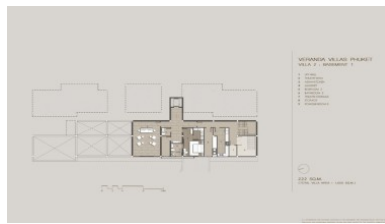
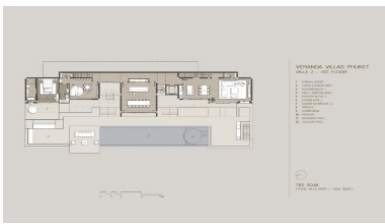




**PhuketRealtor.com**

288 Soi Ekkamai 18, Khwaeng Khlong Tan Nuea,  
Khet Watthana, Krung Thep Maha Nakhon 10110  
Ph. 093 606 0906  
Office Whats app : +66 93 606 0906

# Upcoming Sea-View Villa in Phuket Thailand | For Sale & Limited Supply!



## Property Detail

Price	98,000,000 THB
Location	East Side Thailand
Bedrooms	3
Bathrooms	3
Land Size	1364 area
Building Size	946 sqm
Type	villa

## Description

**Upcoming Sea-View Villa in Phuket Thailand**

Embark on a transformative journey to Veranda Private Collection, an unparalleled haven that redefines tropical luxury living. This exclusive collection comprises just 6 opulent pool villas and 12 exquisite pool suites, promising an intimate escape into the essence of opulence.

Strategically perched atop a lush hillside with prime beachfront access, Veranda boasts breathtaking, borderless vistas of the Andaman coastline. Your new home offers not just a residence but an indulgent lifestyle, with premium facilities and services seamlessly integrated into the adjacent 5-star resort. Elevate your experience further with a wealth of personalized, on-demand services designed for your ultimate convenience.

Picture yourself basking in the fresh ocean breezes, gazing over an infinite horizon where the colors of sea, sky, and mountain come vividly to life. Unwind in your private infinity pool or Jacuzzi, soak up the sun on the expansive terrace, or indulge in delectable alfresco dining—each moment in your villa's outdoor spaces provides a truly unique and immersive sensory experience, awakening your spirit and enriching your soul.

Veranda Private Collection is meticulously designed to absolute perfection, featuring contemporary villas and suites with private pools and expansive outdoor spaces. The distinctive charm of Phuket's Old Town architectural and cultural heritage is seamlessly woven into the project's interior and exterior, creating a timelessly refined simplicity enriched with soothing touches of nature. Designed for modern lifestyles, these living spaces flawlessly fuse form and function to beautifully frame the island's captivating natural splendor.

Nestled within a verdant hillside, embraced by fresh sea breezes at Cape Panwa, Veranda beckons as a sun-kissed private paradise. Phuket, Thailand's largest island and a world-renowned tourist destination, is just an hour's flight from Bangkok, with daily direct flights available from most regional hubs.

Seize the opportunity to make this incredible island the backdrop of your tropical dreams. Veranda Private Collection invites you to experience spectacular shorelines, sweeping sunset vistas, clear turquoise waters surrounded by scenic outlying islands teeming with marine life, forested mountain ranges, towering limestone cliffs, delectable local cuisine, and a rich cultural heritage. Your tropical paradise awaits—schedule your private viewing now and make your dream lifestyle a reality.

---

**Interested with this listing? Contact us today at:**

**+66 93 606 0906/ [info@phuketrealtor.com](mailto:info@phuketrealtor.com)**