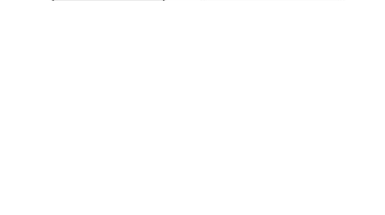
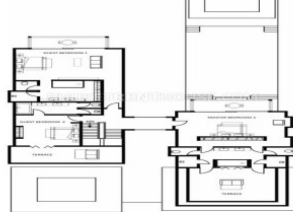
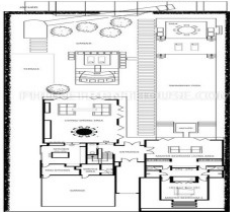
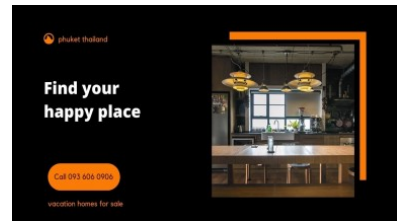
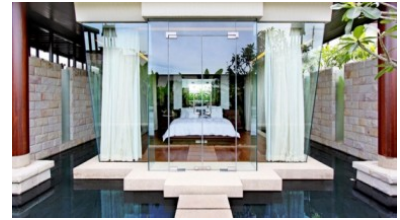


PhuketRealtor.com



288 Soi Ekkamai 18, Khwaeng Khlong Tan Nuea,
Khet Watthana, Krung Thep Maha Nakhon 10110
Ph. 093 606 0906
Office Whats app : +66 93 606 0906

Waterfront Living | Phuket Luxury Real Estate | Sold w/ Yacht Berth



Property Detail

Price	164,500,000 THB
Location	Phuket Town Thailand
Bedrooms	5
Bathrooms	6
Land Size	1204 area
Building Size	1058 sqm
Type	villa

Description

Phuket Luxury Real Estate

Indulge in Unparalleled Luxury: Your Private Villa with Yacht Berth

Nestled at the foot of this prestigious estate lies your very own private 23-meter yacht berth, beckoning you to embark on unforgettable journeys amidst the crystalline waters, limestone island formations, and pristine beaches of the Andaman Sea. As you enter the grounds of this remarkable property, a sense of opulence and spaciousness envelops you, setting the stage for an extraordinary living experience.

A grand cobblestone driveway welcomes your guests, leaving no doubt that you have arrived. With a five-car garage at your disposal, convenience and luxury are at your fingertips. Step into the Formal Living Room and immediately feel a sense of harmony and serenity. Every detail has been meticulously attended to, from the polished Teakwood floors to the coffered ceilings and silk tapestries, ensuring an ambiance of comfort and conviviality.

The Family Room opens up to the pool deck through full-height sliding windows, bathing the space in natural light and creating a seamless connection between indoor and outdoor living. With its own ensuite bathroom, the Family Room also doubles as a spare bedroom, providing flexibility and convenience for your guests.

Elevated on a polished marble platform, the dining room sets the stage for unforgettable gatherings. With seating for twelve and a full-height window overlooking the rear grounds of the estate, it creates an enchanting backdrop for shared meals and memorable moments. The serving area, conveniently located at the doorway leading to the kitchen, ensures effortless dining experiences.

As you ascend to the second floor of the Royal Marina Villa, you will discover the Master Suite Lounge, serving as a transition point from the luxury of the ground floor to the opulence and seclusion of the Master Bedroom Suite. Open the full-height sliding windows and be captivated by the breathtaking views of yachts moored at your private berth. The Royal Master Bedroom awaits, commanding sweeping views of your estate and the yachts below. With high, vaulted ceilings of polished teak and warm, muted colors throughout, this stunning retreat exudes tranquility and sophistication.

The Master Bathroom is a sanctuary of indulgence, appointed with the finest fittings and offering a personal jacuzzi with full-length windows, where you can bask in the beauty of the sunrise. The expansive dressing room and doors leading to the Master Bedroom complete this lavish sanctuary.

Step outside to the pool deck, where fitness, pleasure, dining, lounging, and sunbathing converge. A plush in-pool cabana invites you to relax and unwind, while a sunken dining sala and reflecting pond add an element of elegance and serenity. Whether by day or night, the pool area dazzles and shimmers, creating an enchanting backdrop for unforgettable moments.

This Luxury Villa with Yacht Berth is available as either leasehold or freehold, providing you with flexibility and ownership options. For a glimpse into the extraordinary lifestyle that awaits, we invite you to watch the video showcasing a Penthouse offered in the same marina.

Enquire today and embrace the pinnacle of luxury living with your very own Private Villa with a Yacht Berth. Experience a life of unrivaled opulence, exclusivity, and endless possibilities in this exceptional estate.

Interested with this listing? Contact us today at:

+66 93 606 0906/ info@phuketrealtor.com